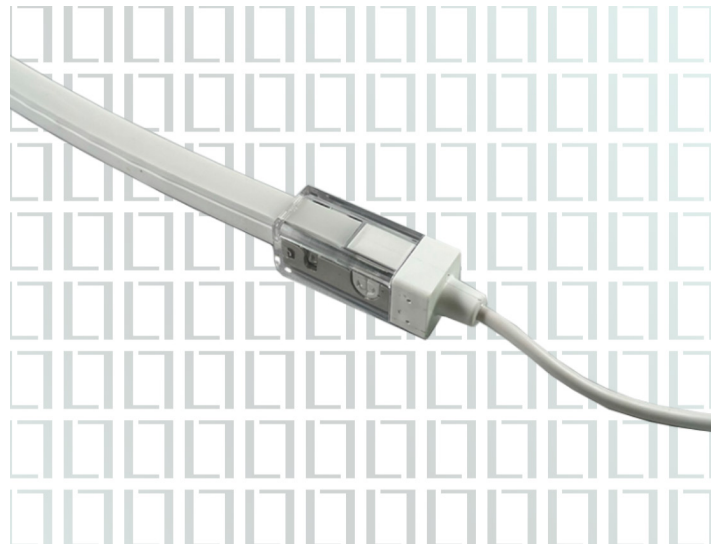
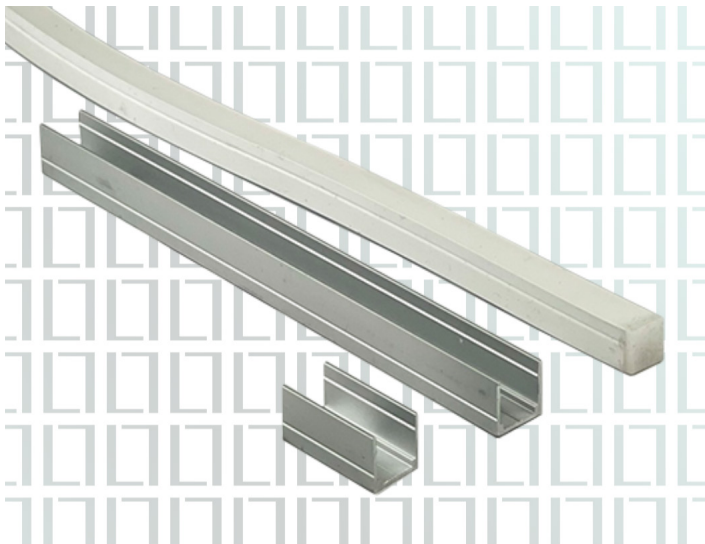


RINIA LED MINI FLEX

Top Bend 24V DC 10W/M CRI90+

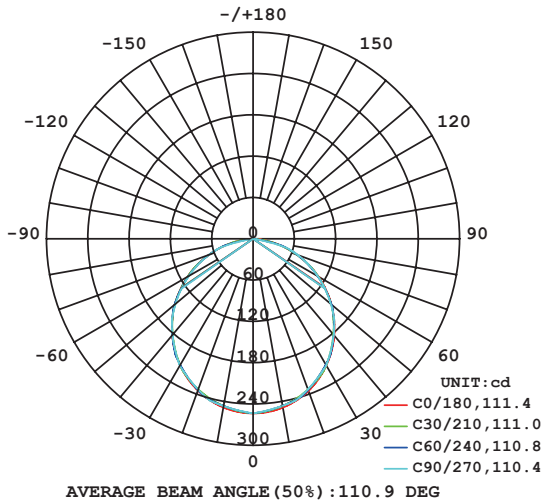
Wattage:	10w/m			
Colour Temperature:	2000K	2200K	2400K	2700K
LED Lumen Metre (lm/m):	512 lm/m	560 lm/m	520 lm/m	600 lm/m
Efficacy:	49.5 lm/w	54.2 lm/w	51.4 lm/w	57.8 lm/w
Colour Rendering Index:	92	92	93	93
TM-30-Rf:	91	92	92	92
TM-30-Rg:	94	97	98	100
Voltage:	24V DC			
IP Rating:	IP67 (10m reel; uncut) - IP65 with connectors - UV & Saltwater resistant			
Minimum Bend Radius:	50mm			
Dimensions:	10mm x 10mm			
Maximum Run Length:	10m			
Cut Increments:	100mm			
Beam Angle:	120°			
Dimming:	0-10v / 1-10v / DALI / Mains (phase)			



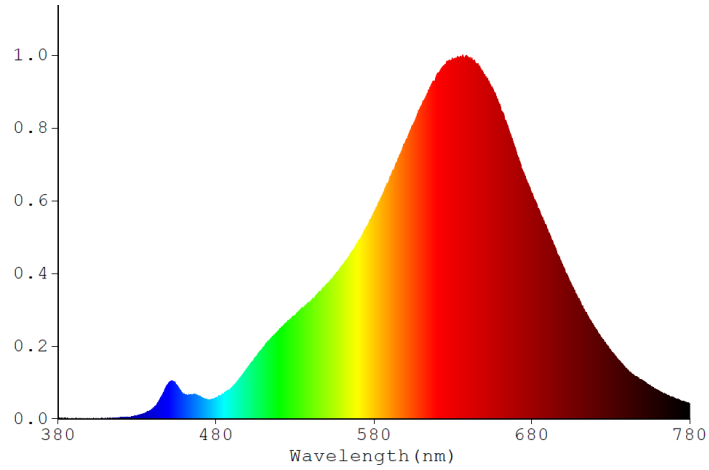
Rinia LED Mini Flex is a robust and water resistant product with a small profile of only 10mm. The smooth surface and matte finish provide a clean and continuous lighting effect. It can be supplied as a Top Flex that can bend along the light emitting face or a Side Flex. If supplied as a whole reel (10m) with the manufactured ends it is IP67 and if cut to size with end caps it is IP65.

Top Bend 24V DC 10W/M CRI90+

Luminous Intensity Distribution 2700K



Spectrum Wavelength (nm) 2000K

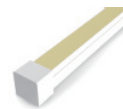


CRI 2000K

R1	92
R2	95
R3	98
R4	93
R5	92
R6	97
R7	91
R8	80
R9	58
R10	89
R11	95
R12	88
R13	93
R14	97
R15	86



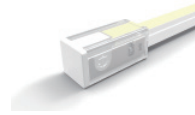
Power Cap - Straight
Width: 17.8mm
Height: 17.0mm
Length: 45.0mm



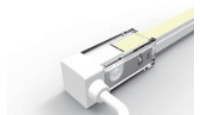
End Cap
Width: 12.7mm
Height: 12.7mm
Length: 9.6mm



Power Cap - Side Left
Width: 17.8mm
Height: 17.0mm
Length: 45.0mm



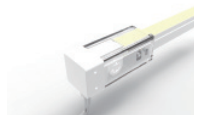
End Cap
Width: 17.8mm
Height: 17.0mm
Length: 37.5mm



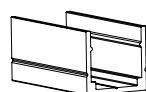
Power Cap - Side Right
Width: 17.8mm
Height: 17.0mm
Length: 45.0mm



Jumper Connector
Width: 17.8mm
Height: 17.0mm
Length: 45.0mm
Cable: 300mm



Power Cap - Bottom
Width: 17.8mm
Height: 17.0mm
Length: 45.0mm



Aluminium Clip
Width: 12mm
Height: 12.5mm
Length: 25mm



Aluminium Profile
Width: 12mm
Height: 12.5mm
Length: 100mm

PLEASE NOTE:

Power supplies & dimmable interfaces must be placed in accessible, safe and well ventilated locations. If the LED tape is to be placed over 1 Meter away from the power supply please ensure voltage drop does not exceed 3%. Electrician to ensure correct cabling is specified. Please contact lightbout.iQ for more information.